

UNIVERSITY OF COPENHAGEN - PLANT SCIENCE CENTER

Copenhagen, Denmark, Invited Competition 2010

Partner: Dan Stubbergaard (COBE), Lars Bendrup (Transform)

Project Team: Eik Bjerregaard, Janine Tuechsen, Mans Nijkamp, Martin Boles (COBE), Merete Andersen, Laurent Temmerman, Ciara Mccurtin, Agnes Lodor (Transform), Patrick Blanc (vegetation wall design)

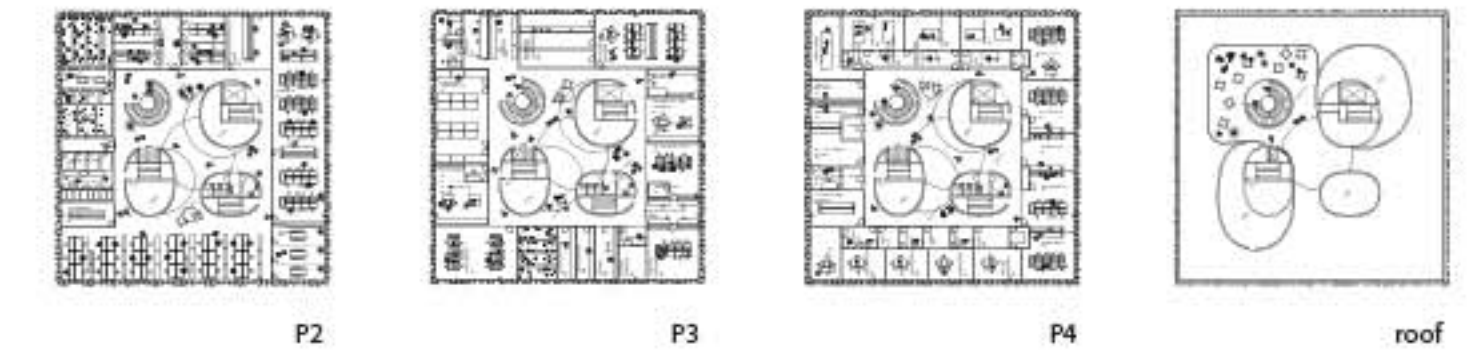
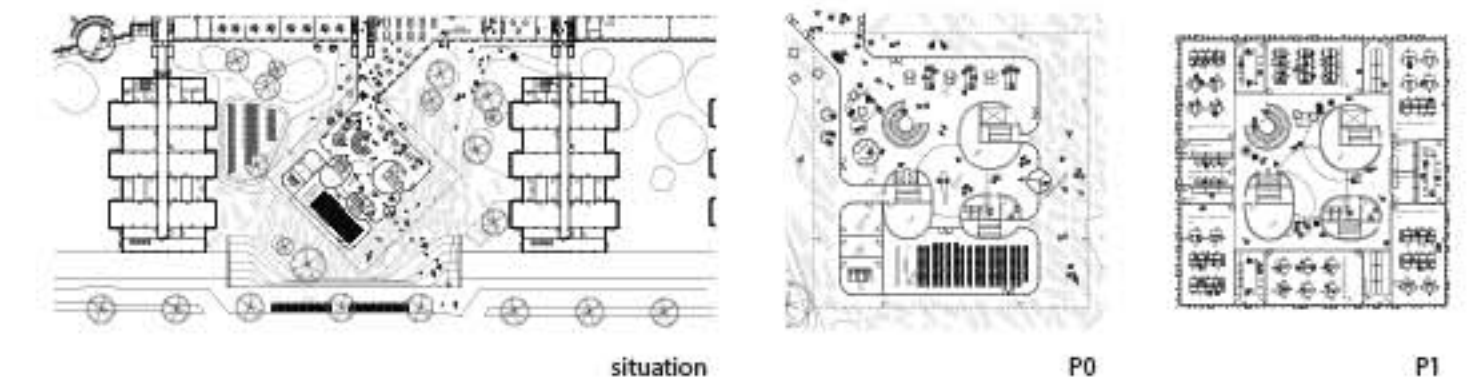
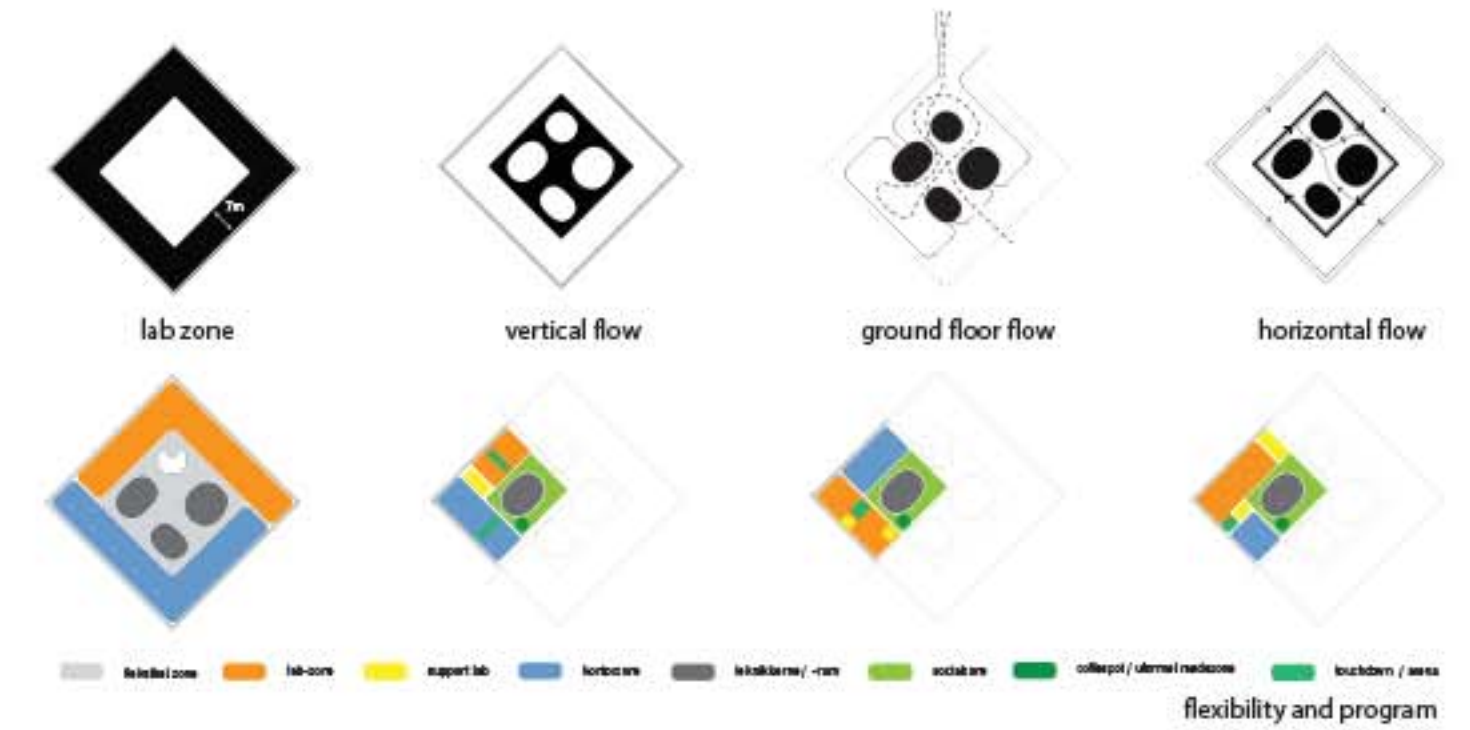
Copenhagen Plant Science Centre takes its starting point in the chain from earth to table with a focus on healthy food, energy, climate and environment. The Centre will form the framework for a further scientific strengthening of the course from basic research to industrial application of research into plants and biotechnology. Academically, the Centre will seek to integrate basic plant research, nanobioscience, microbiology and food science.

The Green Path runs through and along Frederiksberg Campus and will become a new access road to LIFE. The Path is reserved for cyclists and pedestrians, and it allows people to move through the city. Once The Green Path has been completed, cyclists will be able to move easily across the entire city from Lyngbyvej to Valby. The Path will run across Agade via a bridge, which will connect Nørrebro – and the Nørrebro Park in particular – with Frederiksberg.

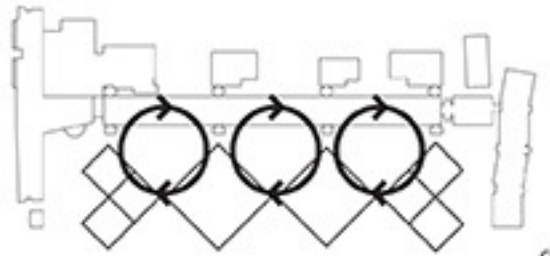
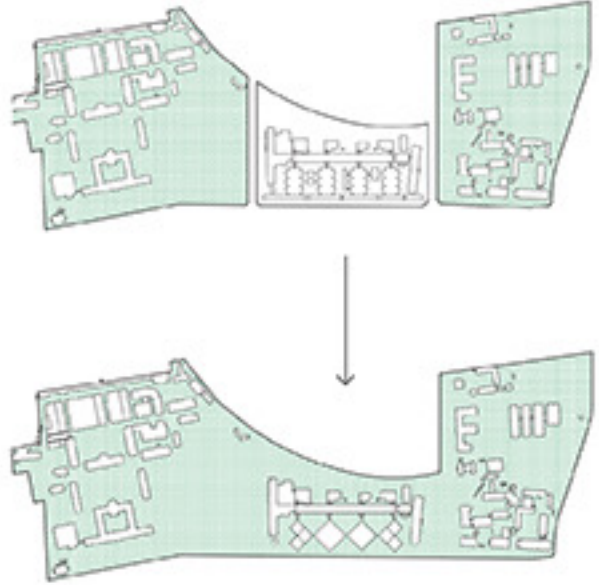
The competition objective consists of two elements:

a: Copenhagen Plant Science Centre, 6,825 m² of laboratory and teaching facilities.

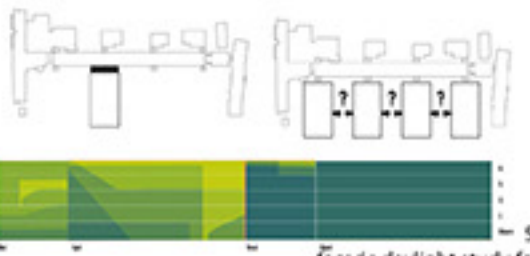
b: Master plan for the competition area with a total of approx. 25,000 m² newbuild, where an optional 5-8,000 m² laboratory and office building is to be located to the north of CPSC.



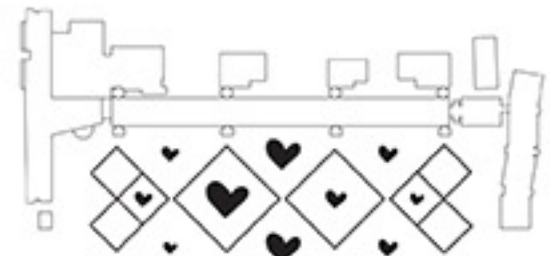
CPSC model 1:100



circulation



facade daylight study for slab concept
55% in shadow



activation



facade daylight study for COBE concept
35% in shadow



render by VISMO



render by VISMO