

FILM ACADEMY AND HOUSE FOR DIRECTOR JOAO BOTELHO

Lisboa, Portugal, School Project 2008/09

Teachers: Carlos Lampreia, Prof. Alberto Oliveira

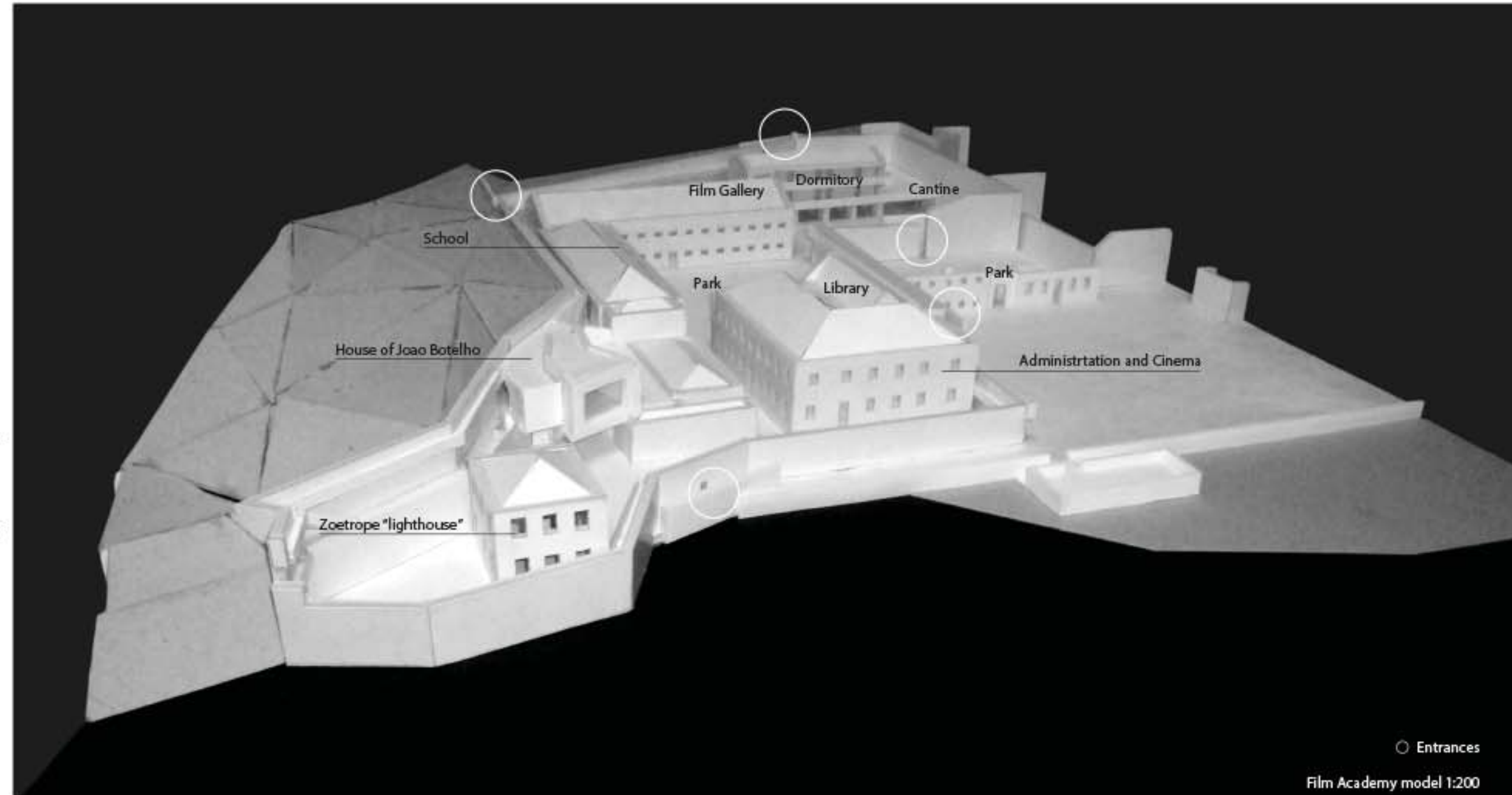
"My students should be prisoned in the school to be concentrated on work"
Joao Botelho, director

Site is located in southern bank of the river Tejo in Traffaria - Lisboa. Right next to the ferry station, it has very good connection with a city. Former prison should be transformed into Film Academy directed by famous portuguese director Joao Botelho. As part of the campus, there is a house for a director with a view to the industrial harbour and over the campus, with a small garden.

Former guards galleries are transformed into path running around the whole campus. Wall is dividing a campus from traffaria and it is perforated with entrances providing connections. All entrances are hidden behind other walls and wall became to be a kind of a door. Wall is also providing different activities and director's house is also growing from a wall.

Southern entrance is designed to provide no-barrier connection to campus from parking. Inside is connected from out by a park as well.

Project was designed after many talks with Joao Botelho.



north elevation

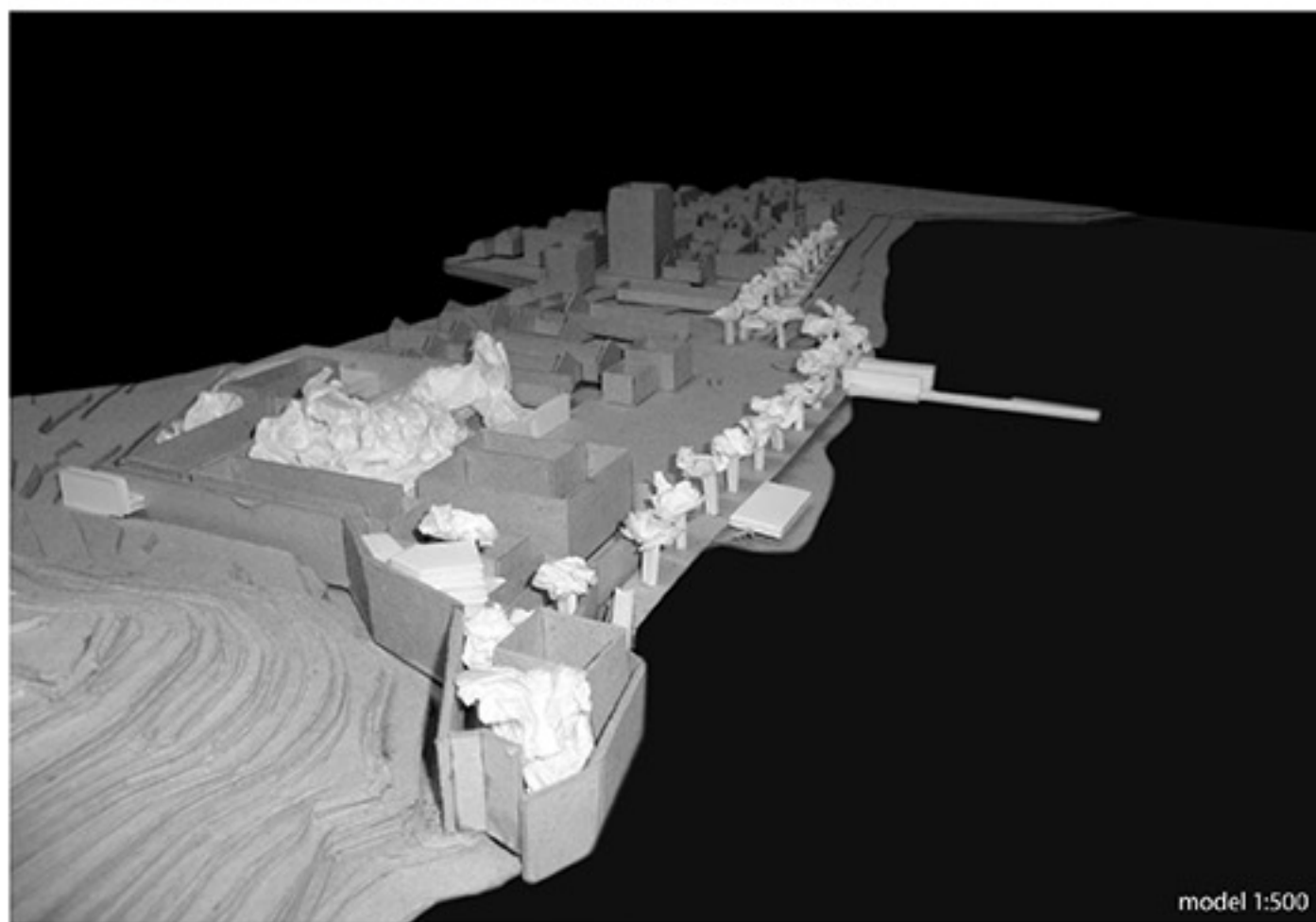


situation

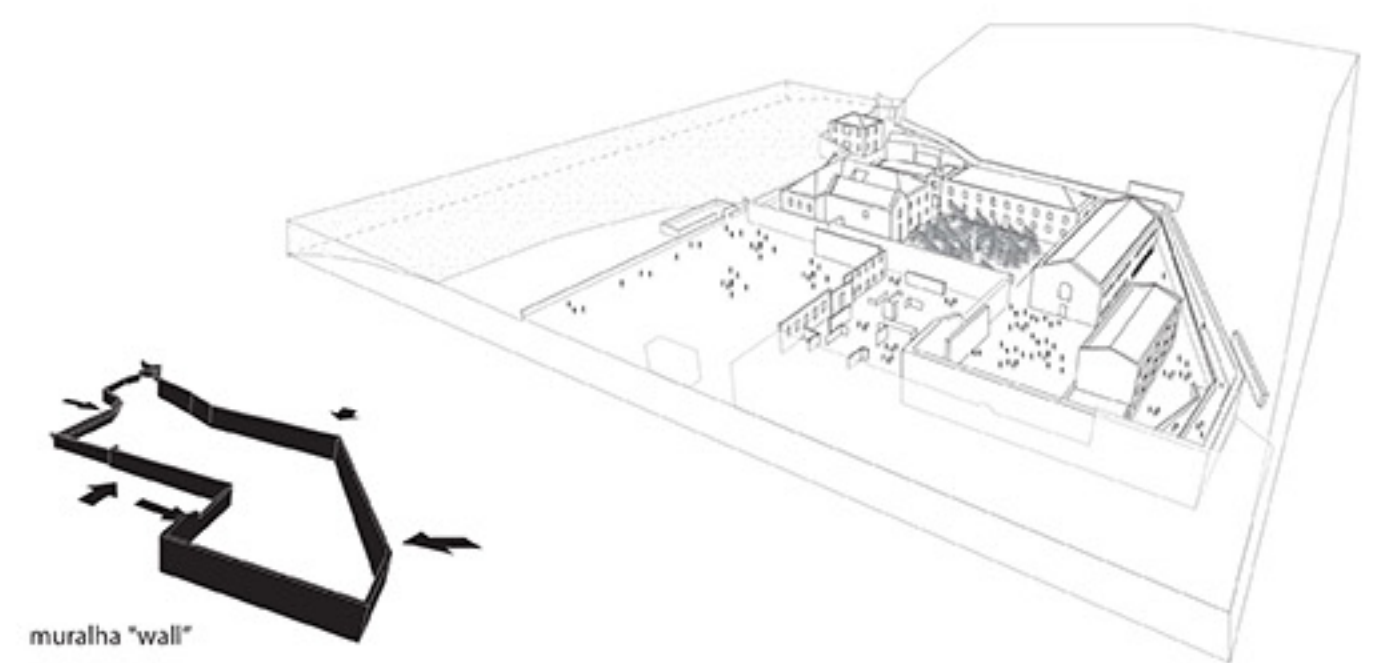


P0

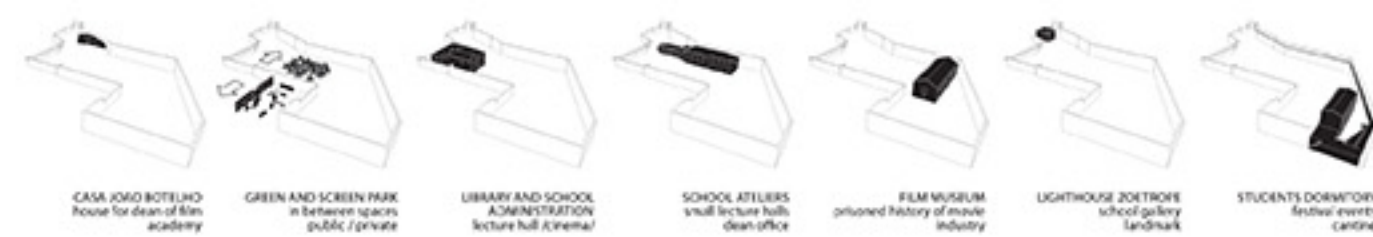
P1



model 1:500



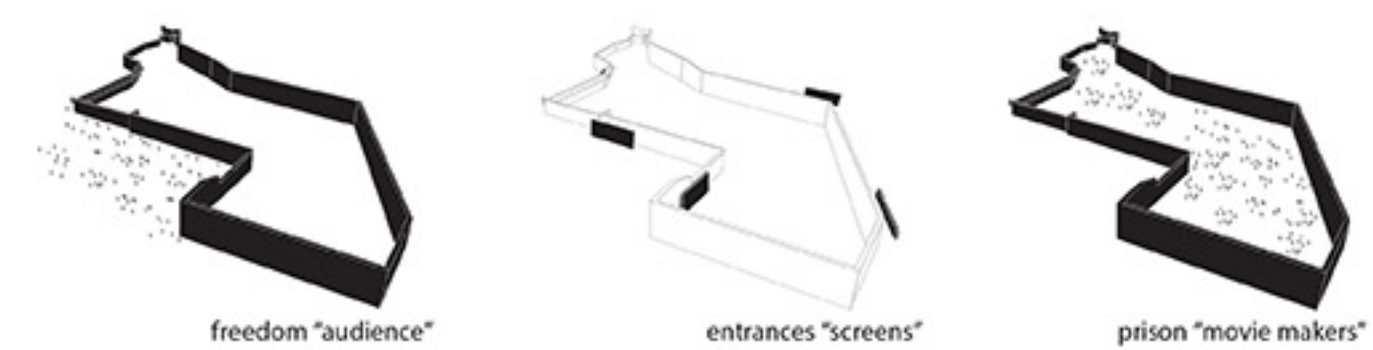
muralha "wall"



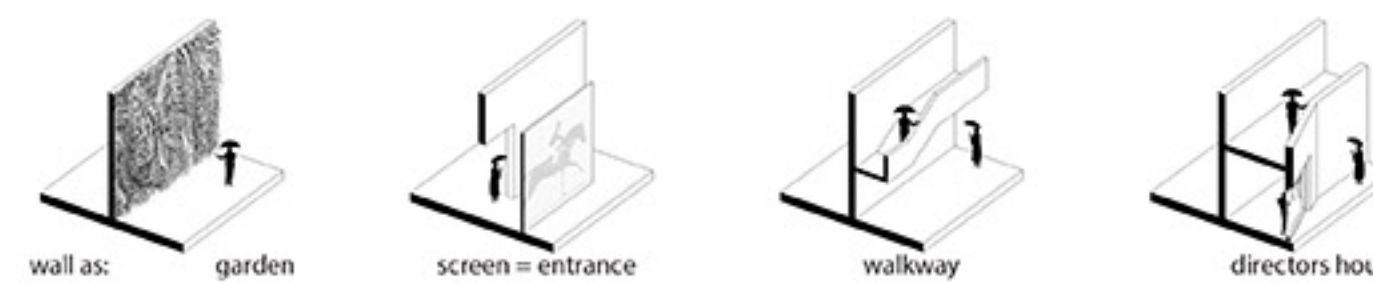
CASA JOAO BOTELHO house for dean of film academy
 GREEN AND SCREEN PARK in between spaces public / private
 LIBRARY AND SCHOOL ADMINISTRATION lecture hall / cinema
 SCHOOL ATTILERS small lecture halls dean office
 FILM MUSEUM prisoned history of movie industry
 LIGHTHOUSE ZOETROPE school gallery landmark
 STUDENTS DORMITORY festival events centre



movie as prisoner
 audience screen movie makers idea



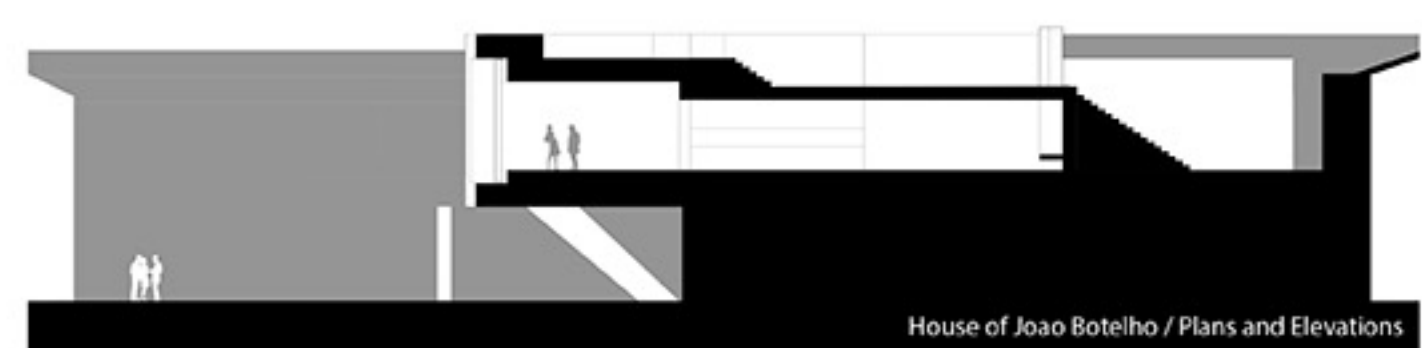
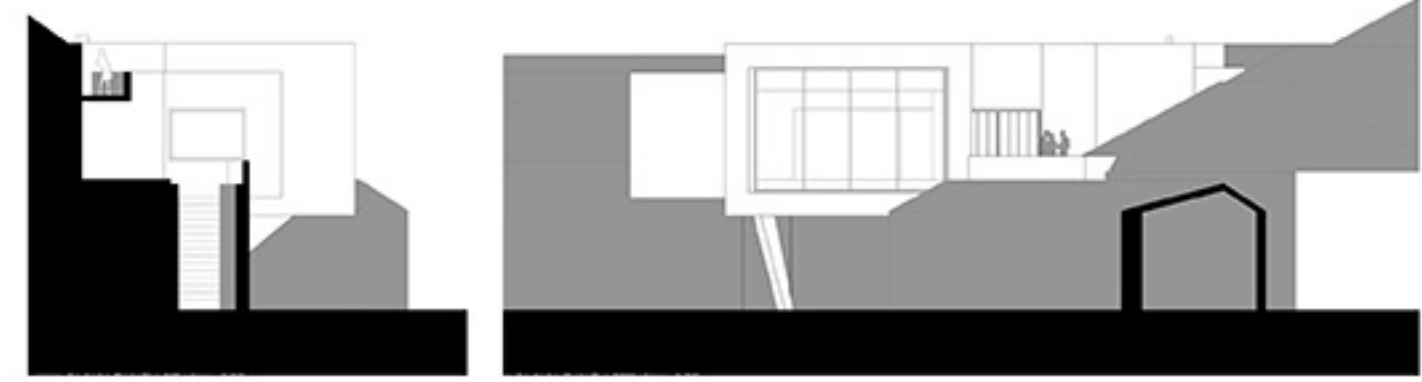
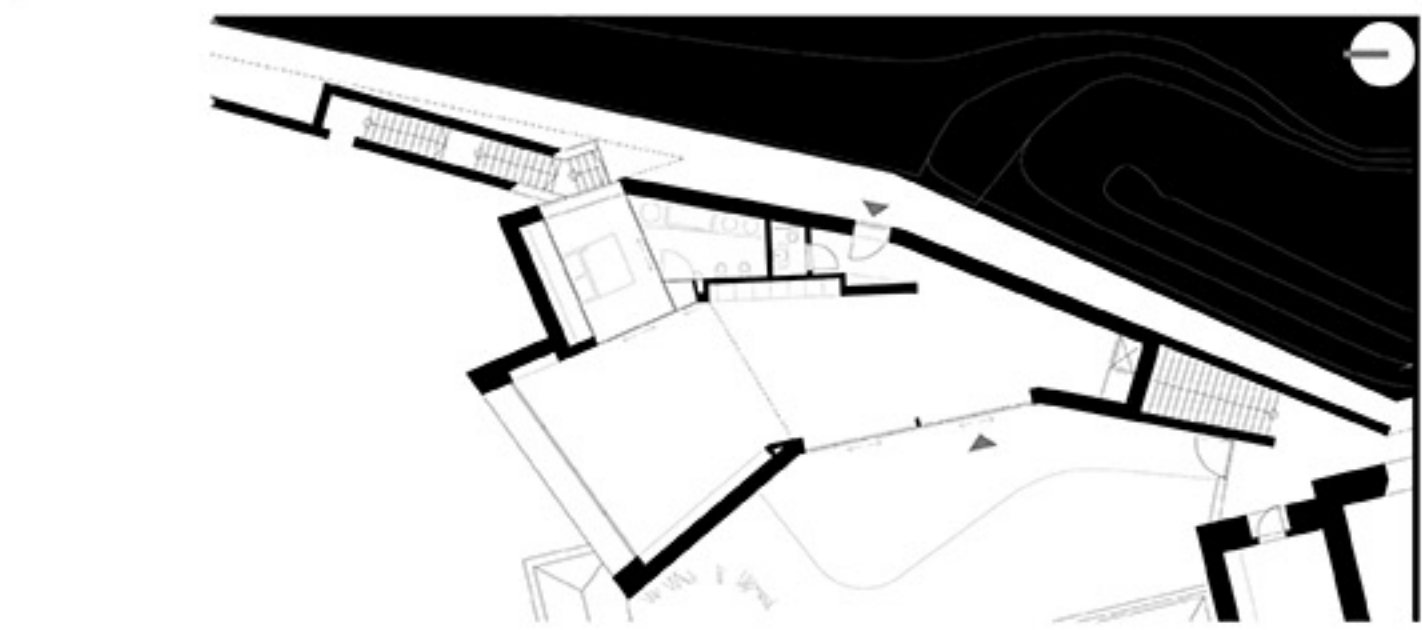
freedom "audience"
 entrances "screens"
 prison "movie makers"



wall as: garden
 screen = entrance
 walkway
 directors house



east elevation/section



House of Joao Botelho / Plans and Elevations